

# Interior Sun Control Fabrics

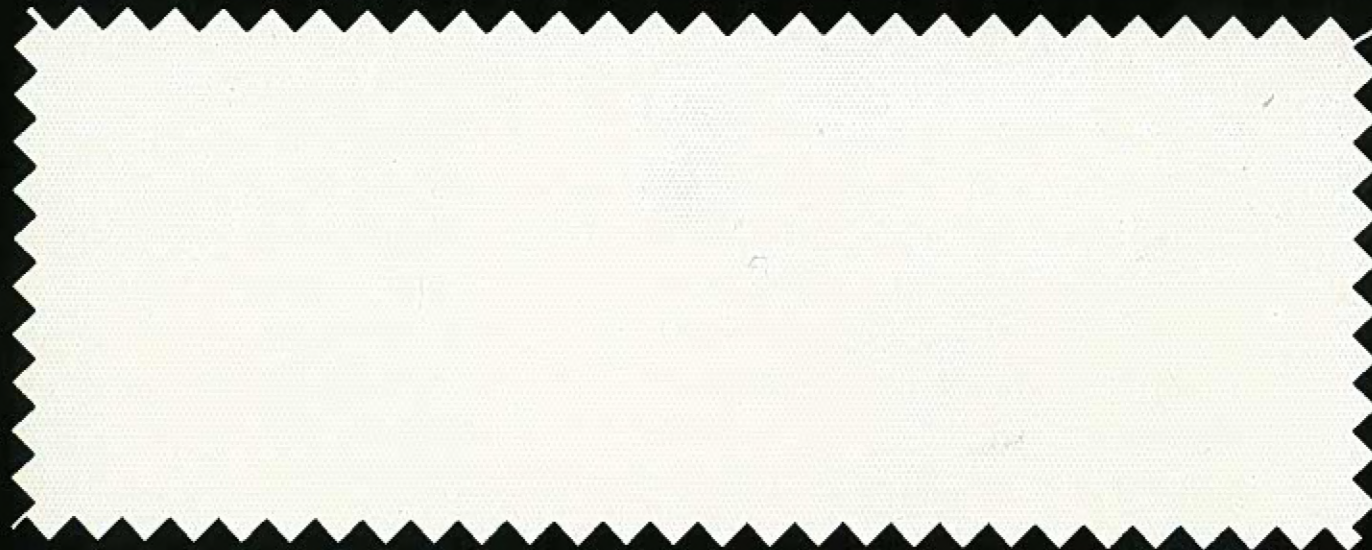


**EcoGreen**  
Solar Shades, LLC.

SheerWeave<sup>®</sup>

BLACKOUT FABRIC

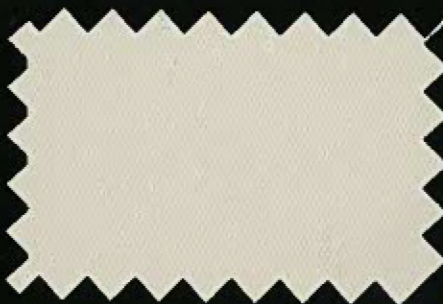
STYLE 7500 BLACKOUT FABRIC



R14 Coconut



R13 Ice



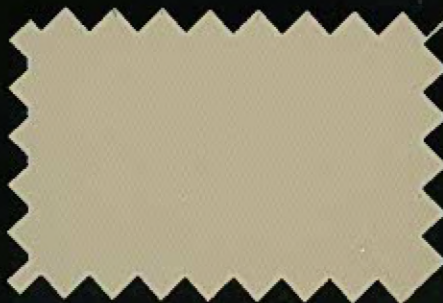
R15 Loft



R16 Spirit



R17 Dune



R18 Starfish



R19 Stone



R20 Odyssey



R21 Orient



R22 Midnight

# SheerWeave® Style 7500 BLACKOUT FABRIC

## Specifications

■ This attractive new blackout fabric maintains high quality at an economical price. Style 7500 is presented in a classic range of neutral colors and a unique PVC-free<sup>1</sup> composition.

**Fire Classification:** California U.S. Title 19 (small scale), NFPA 701-2004 TM#1 (small scale) and CAN/ULC-S109-03 (large and small scale)

**Bacteria and Fungal Resistance:** ASTM E 2180 and ASTM G 22

**Environmental Certification:** GREENGUARD Certified and GREENGUARD for Children and Schools Certified

**Lead Free:** RoHS / Directive 2002/95/EC, US Consumer Product Safety Commission Section 101 and ANSI/WCMA A100.1-2007 for lead content

**Standard Uses:** Roller shades, vertical blinds and panel track systems

**Warranty:** 5-year interior



**Standard Widths:** 78", 98" and 118" (198.1cm, 248.9cm and 299.7cm)

**Standard Roll Length:** 30 Linear Yards (27.4m)

**Composition:** 100% Polyester with Acrylic Coating (PVC-free)

**Mesh Weight:** 11.8 oz/yd<sup>2</sup> (400 g/m<sup>2</sup>)

**Fabric Thickness:** .013 in (0.330mm)

**Openness Factor:** Opaque

*Railroading this fabric is not recommended.*

*Colors may vary slightly from swatch samples. All variations are within industry standards.*

**Cleaning Instructions:** Fabric should be regularly dusted/vacuumed as appropriate. If commercial spot cleaners are used, they must first be tested and allowed to dry on an inconspicuous area to ensure compatibility.

### Solar Heat Control Properties of Phifer SheerWeave Style 7500 Fabrics Installed Internally, Zero-Degree Profile Angle

Style No.	Color	* Solar Optical Properties				Shading Coefficient w/					
		TS	RS	AS	TV	Single			Insulating		
						1/8CL	1/4CL	1/4HA	1/2CL	1CL	1HA
R13	Ice	0	68	32	0	0.28	0.28	0.29	0.27	0.28	0.23
R22	Midnight	0	68	32	0	0.28	0.28	0.29	0.27	0.28	0.23

\* Performance evaluations conducted by Matrix, Inc., Mesa, Arizona.

TS = Solar Transmittance 1/8 CL = 1/8" Clear Glass  
 RS = Solar Reflectance 1/4 CL = 1/4" Clear Glass  
 AS = Solar Absorbance 1/4HA = 1/4" Heat Absorbing Glass  
 TV = Visual Transmittance 1/2 CL = 1/2" Insulating Clear Glass  
 1 CL = 1" Insulating Clear Glass  
 1HA = 1" Insulating Heat Absorbing Glass

For complete technical information, current test results, performance specifications and larger samples, contact our Sun Control Marketing Dept.



**EcoGreen**  
Solar Shades, LLC.

**Ken Herman, President**  
 Ken@EcoGreenSolarShades.com  
 EcoGreen Solar Shades, LLC  
 7603 First Place B7  
 Oakwood Village, OH 44146  
 Phone: 440-232-1551  
 Fax: 440-232-1122  
 Toll Free: 877-610-1555